



112ACL100



112ACL63



112ACB63

Application

- ✓ Vibrating machineries, diesel engines, refrigeration industry
- ✓ Measuring needs with sudden or dynamic pressure changes
- ✓ Hydraulic systems, pumps and presses
- ✗ Do not use directly for medias that are viscous, crystallizing and corroding copper alloy

Special Features

- ✓ Cost efficient
- ✓ Heavy duty design for 100mm dial size
- ✓ No leakage guaranteed
- ✓ Strictly Calibrated, supervised by Random testing

Description

InstruMate group of pressure gauges covers a series of oil-filled pressure gauges efficient for plants or machineries with pulsating pressures or mechanical vibrations. As sensitive a pressure gauge as might be, vibration threatens its long life span and that is the time InstruMate 112 series come into action.

InstruMate 112AC is shock resistant (when filled) and is offered in the popular design of crimp type. This cost efficient pressure gauge has screws for holding the mechanism on its case and this is a sign to distinguish it from cheap level of gauges with short life span.

Since oil filled pressure gauges have a copper alloy connection, considerations about their corrosion and clogging is recommended. The model 112AC is constructed from a matte stainless steel case with a crimped ring. This model has a strong compact design. All InstruMate pressure gauges have geometrically balanced dial designs, thus a much easier reading experience.

Default Specification

Design	Nominal sizes in mm
EN 837-1	63, 100
Process Connection	
Brass NS 63: G ¼ NS 100: G ½	Bottom connection: 112ACL Center or lower back connection: 112ACB
Temperature Effect	Pressure Element
± 0.04 x (t ₂ -t ₁) % of the span t ₁ is the Reference temperature in degrees celsius. t ₂ is the Ambient temperature in degrees celsius.	Copper alloy C-type for ≤ 60bar Helical for > 60bar
Pressure Limitations	
NS 63 Steady: 75% of full scale Fluctuating: 65% of full scale Over-Pressure: 100% of full scale	NS 100 (Heavy duty) Steady: 100% of full scale Fluctuating: 85% of full scale Over-Pressure: 130% of full scale (short time)
Scale Range	Permissible Temperature
NS 63: 0...1 bar to 700 bar NS 100: 0...0.6 bar to 700 bar Vacuum & compound ranges	Ambient: -20...+60 °C Medium: +65 °C Maximum
Pointer	Window
Aluminum, Black	Polycarbonate
Pressure units	Accuracy
bar/psi (other pressure units available on request)	NS 63: 1.6% of full scale NS 100: 1% of full scale
Filling oil	Dial
Glycerin	Aluminum
Case	Movement
Matte SS304, Crimp type	Copper alloy

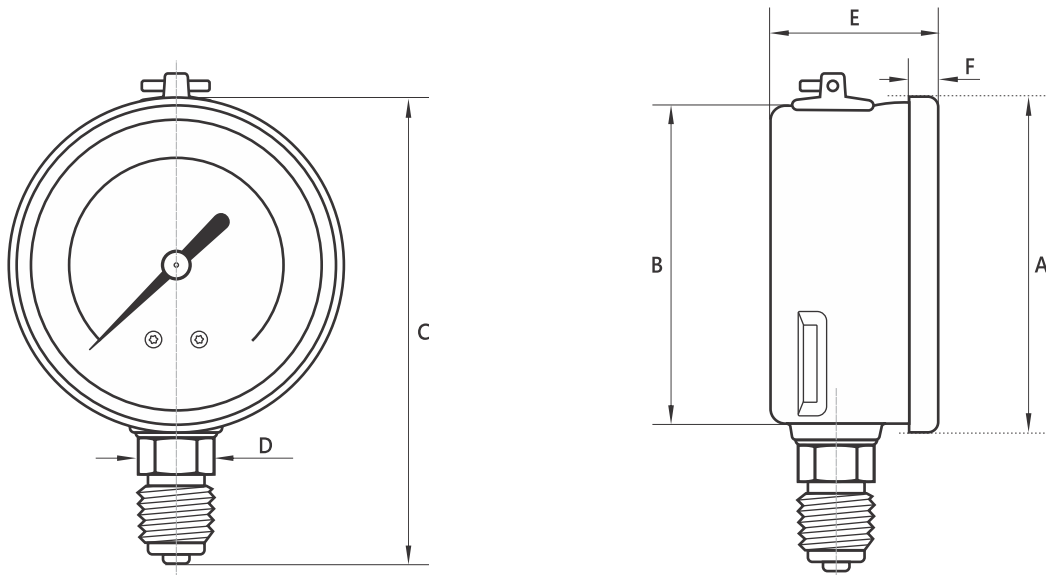


Options

- ✓ Requested process connections other than stated in the table
- ✓ Other pressure units
- ✓ Silicon oil or to be shipped without oil
- ✓ Dial design per request

Dimensions (in mm)

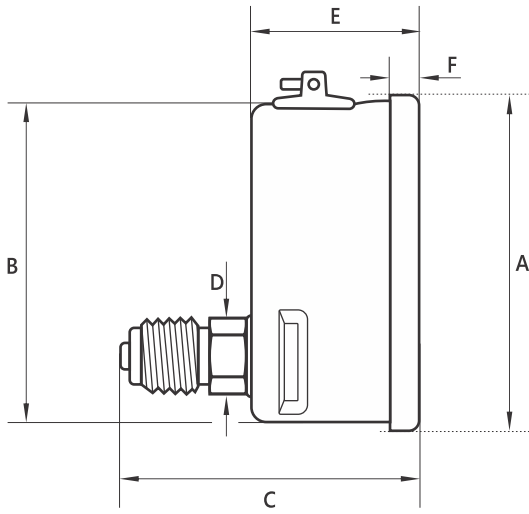
■ DS 63, 100 Bottom Connection



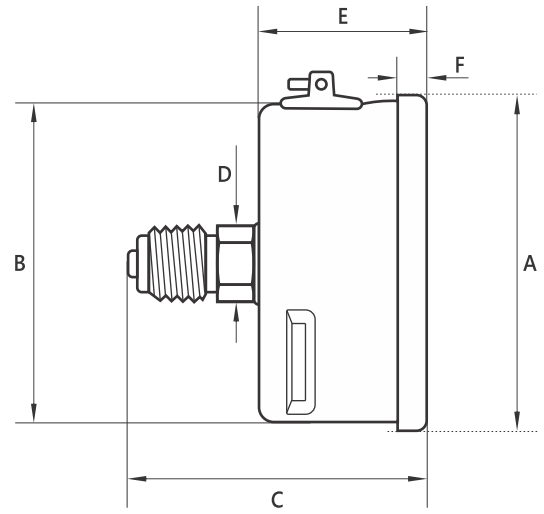
112ACL

Nominal Size	A	B	C	D	E	F	KG
63	68	62	91.2	14	32	5.3	0.23
100	107.5	99	142.5	22	43	8.3	0.59

■ DS 63, 100 Lower Back Connection



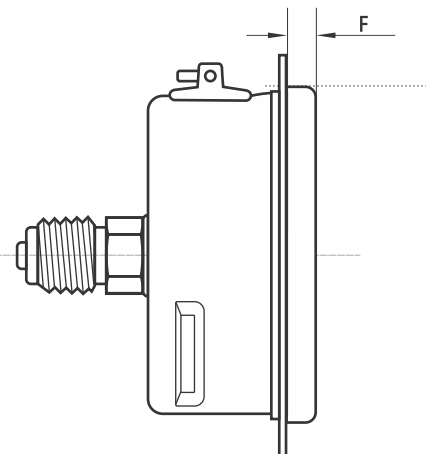
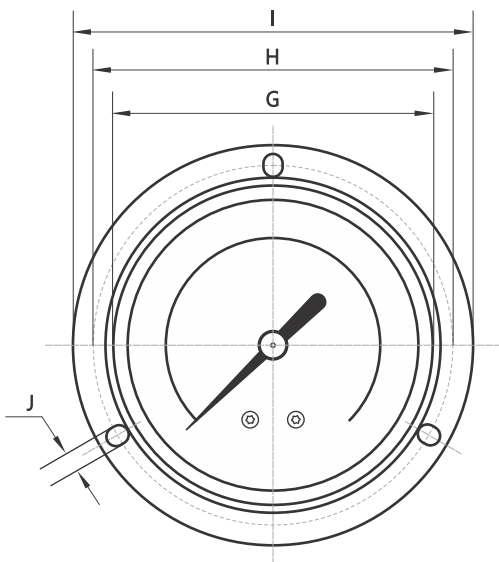
■ DS 63, 100 Center Back Connection



112ACB

Nominal Size	A	B	C	D	E	F	KG
63	68	62	49	14	32	5.3	0.24
100	107.5	99	77	22	43	8.3	0.61

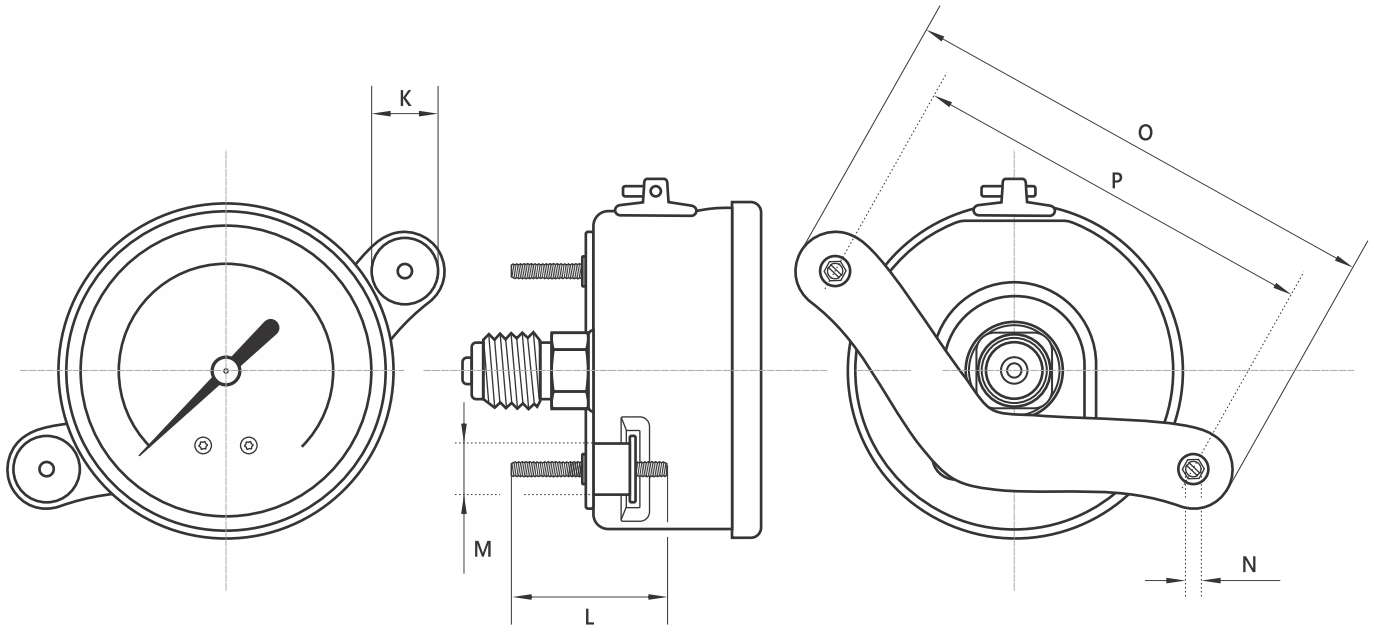
■ DS 63 with Front Flange



112ACB

Nominal Size	F	G	H	I	J	KG
63	5.3	63	78	87.5	4.6 x 6.5	0.267

■ DS 63 with U-Clamp



112ACB

Nominal Size	K	L	M	N	O	P	KG
63	14.2	35	9.2	4.5	87	72.5	0.285

Thread Type	Code
NPT	N
BSPP (G)	B
BSPT	Z
Metric	M

Thread Size	Code
1/4	4
1/2	2
3/8	3
1/8	8
for metric sizes write the number	M20×1.5

How To Order

Product Group Name	Model	Mounting	Nominal Size	Thread Type	Thread size	Scale Range	Options
<i>Example:</i> Oil filled Pressure Gauge	112AC	L	100	B	2	0...16bar-psi	-

Or simply order by item number on the basis of your previous purchases.

InstruMate®

InstruMate Co, Limited

www.Instrumate.com | info@Instrumate.com